

ORIGINAL ARTICLE

Trends in case-fatality rates of COVID-19 in the World, between 2019 - 2020

Henrique de Moraes Bernal¹, Carlos Eduardo Siqueira^{2,3}, Fernando Adami¹, Edige Felipe de Sousa Santos^{1,4}

 Open access

¹Laboratório de Delineamento em Estudos e Escrita Científica, Centro Universitário Saúde ABC, Av. Príncipe de Gales, 667 - Santo André - SP - Brazil - CEP - 09060-590.

²School for the Environment, University of Massachusetts Boston. 100 Morrissey Boulevard, Boston, MA, 02125.

³Graduate Entry Medical School, University of Limerick, V94 T9PX, Limerick, Ireland.

⁴Faculdade de Saúde Pública, Universidade de São Paulo (USP), Av. Dr. Arnaldo, 715 - São Paulo - SP - Brasil - CEP - 01246-904.

Corresponding author
edige@usp.br

Article History
Received: May 2020
Revised: September 2020
Accepted: September 2020

Abstract

Introduction: CoV infections can potentially cause from a simple cold to a severe respiratory syndrome, such as the Severe Acute Respiratory Syndrome and the Middle East Respiratory Syndrome (MERS-CoV). The COVID-19 created a new reality for global healthcare models.

Objective: To evaluate trends in case-fatality rates of COVID-19 in the World.

Methods: We conducted a population-based time-series study using public and official data of cases and deaths from COVID-19 in Argentina, Australia, Brazil, Chile, China, Colombia, France, Germany, India, Iran, Italy, Japan, Mexico, Morocco, New Zealand, Nigeria, Peru, Saudi Arabia, South Africa, South Korea, Spain, Switzerland, United Kingdom, United States and Russian, between December, 2019 and August, 2020. Data were based on reports from European Centre for Disease Prevention and Control. COVID-19 was defined by the International Classification of Diseases, 10th revision (U07.1). A Prais-Winsten regression model was performed and the Daily Percentage Change (DPC) calculated determine rates as increasing, decreasing or flat.

Results: During the study period, trends in case-fatality rates in the world were flat (DPC = 0.3; CI 95% [-0.2: 0.7]; p = 0.225). In Africa, Morocco had decreasing trends (DPC = -1.1; CI 95% [-1.5: -0.7]; p < 0.001), whereas it were increasing in South Africa (p < 0.05) and flat in Nigeria (p > 0.05). In the Americas, Argentina showed a decreasing trend in case-fatality rates (DPC = -0.6; CI 95% [-1.1: -0.2]; p = 0.005), the U.S. had flat trends (p > 0.05) and all other American countries had increasing trends (p < 0.05). In Asia, Iran had decreasing trends (DPC = -1.5; CI 95% [-2.6 : -0.2]; p = 0.019); China and Saudi Arabia showed increasing trends (p < 0.05), while in India, Japan and South Korea they were flat (p > 0.05). European countries had mostly increasing trends (p < 0.05): Germany, Italy, Spain, the UK and Russia; France and Switzerland had flat trends (p > 0.05). Finally, in Oceania, trends in case-fatality rates were flat in Australia (p > 0.05) and increasing in New Zealand (p < 0.05).

Conclusion: Trends in case-fatality rates of COVID-19 in the World were flat between December, 31 and August, 31. Argentina, Iran and Morocco were the only countries with decreasing trends. On the other hand, South Africa, Brazil, Canada, Chile, Colombia, Mexico, Peru, China, Saudi Arabia, Germany, Spain, United Kingdom, Russian and New Zealand had increasing trends in case-fatality rate. All the other countries analyzed had flat trends. Based on case-fatality rate data, our study supports that COVID-19 pandemic is still in progress worldwide.

Keywords: COVID-19, Trends, Case-Fatality, Epidemiology.

Suggested citation: Bernal HM, Siqueira CE, Adami F, Santos EFS. Trends in case-fatality rates of covid-19 in the world, between 2019 - 2020. *J Hum Growth Dev.* 2020; 30(3):344-354. DOI: <http://doi.org/10.7322/jhgd.v30.11063>

Authors summary

Why was this study done?

- COVID-19 created a new reality in terms of global healthcare models.
- The scientific evidence so far available are not enough to meet the demands of the pandemic.
- Epidemiological studies are relevant to trigger public health strategies for spread control.

What did the researchers do and find?

- We conducted a population-based time-series study using public and official data of cases and deaths from COVID-19 in Argentina, Australia, Brazil, Chile, China, Colombia, France, Germany, India, Iran, Italy, Japan, Mexico, Morocco, New Zealand, Nigeria, Peru (33538625), Saudi Arabia, South Africa, South Korea, Spain, Switzerland, United Kingdom (UK), United States (U.S.) and Russia, between December, 2019 and August, 2020.
- Trends in case-fatality rates were decreasing only in three countries among twenty-six analyzed: Argentina, Iran and Morocco. It was more significant in Iran.
- Nigeria, the U.S., India, Japan, South Korea, France, Switzerland and Australia had flat trends in case-fatality rates due to COVID-19.
- All the other countries analyzed in our study had increasing trends in case-fatality rates, with more significant results among countries of America and Europe.

What do these findings mean?

- Increasing trends in case-fatality rates were higher between countries of Americas and Europe, suggesting a greater severity of the disease in those continents.
- Decreasing trends in case-fatality rates found in Argentina, Iran and Morocco should attract international attention in order to guide public health policies to reduce COVID-19 case-fatality.
- Based on case-fatality data, our study supports that COVID-19 pandemic is still in progress worldwide.

INTRODUCTION

The coronaviruses (CoV) are a large family of viruses, so named because of surface spikes that looks resemble a crown (corona, Latin)¹. The CoV infections can potentially cause from a simple cold to a severe respiratory syndrome, such as the Severe Acute Respiratory Syndrome (SARS-CoV) and the Middle East Respiratory Syndrome (MERS-CoV)^{1,2}. The COVID-19 is a new variant of the coronaviruses, first isolated in China. The novel coronavirus differs from the others because of its high impact in public health and the huge number of new cases reported in a short time-period^{2,3}.

The COVID-19 created a new reality for global healthcare delivery models^{1,2}. The scientific evidence so far available are not enough to meet the demands to face the pandemic, since data about specific treatment and vaccines are insufficient (WHO)⁴, which forces governments to recommend social distancing as the principal effective strategy to contain the spread of the disease.

Pandemic scenarios require information in order to promptly (re)organize health practices and to provide health care, such as prevention and treatment, control and rehabilitation, since it is essential to health care managers and providers⁵. To address this demand, epidemiological studies are relevant to trigger public health strategies to control.

Furthermore, this global scenario suggests that nobody can now be protected from an emerging and poorly known infectious disease. It would be unwise to make specific predictions about the natural history of the disease or the results to containing SARS-CoV-2 outbreaks, but it is possible to make some incipient conclusions and to protect the most vulnerable from the virus⁶.

In the health area⁷, research is designed to develop reliable data on problems and needs that are important to the individual/community, with a particular focus on guiding practitioners. In line with that, findings about social distancing are probably effective to reduce case-

fatality, since they are suitable to prevent and control the extensive spread of COVID-19⁸.

There is a lack of population-based studies assessing the trends in case-fatality rates in different countries in the world, which is crucial information to understand the pandemic dynamic, the severity of the disease and to elaborate public global health policies⁵. The traditional cumulative case-fatality rates may possibly underestimate the real case-fatality, since each region of the world is experiencing a different stage of the pandemic⁹. Case-fatality rates are not static. Rather, they tend to be dynamic and change over time. Thus, we aimed to evaluate trends in case-fatality rates of COVID-19 around the World.

METHODS

This a population-based time-series study with public and official data available on the website of the European Centre for Disease Prevention and Control (<https://www.ecdc.europa.eu/en>).

Data were collected on August 31, 2020, by household address for COVID-19 reported cases. Population data were extracted from the Country Meters website (<https://countrymeters.info/en>), and included the following countries: Argentina (45,757,489 inhabitants), Australia (2,594,452 inhabitants), Brazil (217,040,683 inhabitants), Chile (18,944,479 inhabitants), China (1,410,334,120 inhabitants), Colombia (50,697,280 inhabitants), France (65,790,781 inhabitants), Germany (81,466,451 inhabitants), India (2,195,755,104 inhabitants), Iran (84,341,761 inhabitants), Italy (60,016,386 inhabitants), Japan (125,901,152 inhabitants), Mexico (136,136,481 inhabitants), Morocco (36,833,644 inhabitants), New Zealand (4,695,515 inhabitants), Nigeria (208,242,721), Peru (33,538,625 inhabitants), Saudi Arabia (35,457,606 inhabitants), South Africa (57,581,898), South Korea (51,472,090 inhabitants), Spain (45,690,902 inhabitants), Switzerland (8,770,577

inhabitants), United Kingdom (66,679,096 inhabitants), United States (333,487,241 inhabitants), and Russia (146,590,156 inhabitants).

The study analyzed cases and deaths reported between December 31, 2019 and August 31, 2020. New cases and deaths were collected according to day of reporting.

Study population, inclusion and exclusion criteria

The World Health Organization assigned the emergency ICD-10 code of “U07.1 COVID-19, virus identified” to a disease diagnosis of COVID-19 confirmed by laboratory testing.

Data collection started in different dates in each country according to the reporting of new cases. In Argentina, it started on March 03; in Australia, on January 25; in Brazil, on January 26; in Canada, on January 26; in China, on January 21; in Chile, on March 03; in Colombia, on March 07; in France, on January 25; in Germany, on January, 28; in India, on January 30; in Iran, on February 20; in Italy, on January 31; in Japan, on January 21; in Mexico, on February 29; in Morocco, on March 03; in New Zealand, on February 28; in Nigeria, on February 28; in Peru, on March 07; in Saudi Arabia, on March 03; in South Africa, on March 06; in South Korea, on January 21; in Spain, on February 02; in Switzerland, on February 26; in the United Kingdom, on January 31; in the United States, on January 21; and in Russia, on February 01.

All confirmed cases and deaths of COVID-19 were included. They were registered according to the 10th Revision of the International Classification of Diseases (ICD-10) as COVID-19, virus identified (U07.1).

Data Collection Procedures

Data were extracted from the public and official data system of European Centre for Disease Prevention and Control (ECDC), section “Latest situation update, epidemiological curve and global distribution.” ECDC is closely monitoring the outbreak, providing risk assessments and public health guidance.

Confirmed cases and deaths were collected from national health information systems responsible for registering, analyzing and publishing official country health data. The data were transferred to the European Centre for Disease Prevention and Control, which updated it daily.

Data about the resident population of each country was obtained from the Country Meters website and we projected population from January to August, 2020. The population data account for the total country population as of January 01, 2020.

In order to minimize possible discrepancies, the data were extracted by two different researchers independently.

Statistical analysis

The COVID-19 incidence (new cases / population) and mortality (deaths / population) rates were calculated, per 1,000,000 inhabitants, and case-fatality (total deaths / total cases) rates, as daily percentage, between January and May 2020.

For trend analyses, we used methods proposed by Antunes and Cardoso (2015)¹⁰. Time-series rates were calculated using a Prais-Winsten regression model, which allowed first-order autocorrelation corrections on values by time. Thus, the following values were estimated: angular coefficient (β) and respective probability (p), considering a significance level of 95% confidence interval (CI 95%).

The data modeling process included transforming rates (dependent variable = Y value) into a base 10 logarithmic function. The independent variable (X value) was days of historical series. We also used the Durbin–Watson test to measure the existence of a first-order autocorrelation of the time series of the daily coefficients, and to verify if the correlation was compatible with the random regression residuals hypothesis¹¹.

The logarithm rates results (β) of Prais-Winsten regression allowed to estimate the Daily Percent Change (DPC) in each country, with the respective confidence intervals (95% CI)¹⁰:

$$\text{DPC} = [-1 + 10^{\beta}] * 100\%$$

$$\text{IC 95\%} = [-1 + 10^{\beta_{\text{min}}}] * 100\%; [-1 + 10^{\beta_{\text{max}}}] * 100\%$$

This procedure made it possible to determine rates as increasing, decreasing or flat, and to quantify percent change in daily¹² incidence, mortality and case-fatality rates. The trend was considered to be flat when the coefficient was not significantly different from zero ($p > 0.05$).

To facilitate the visualization of the trends in case-fatality rates, we reduced the random variation in the graph using the five-order moving average technique¹¹.

We used the Stata 15.1 statistical software to conduct statistical analyses (College Station, TX, U.S. 2018).

RESULTS

Table 1: Cases, deaths and case-fatality of COVID-19, according to countries, between January and August, 2020.

World		AFRICA			
Countries		Morocco	Nigeria	South Africa	
Cases	25.251.334	61.399	53.865	625.056	
Deaths	846.841	1.111	1.013	14.028	
Case-Fatality	3,4%	1,8%	1,9%	2,2%	
AMERICAS					
Countries		Argentina	Brazil	Canada	Chile
Cases	401.226	3.862.311	127.940	409.974	607.938
Deaths	8.401	120.828	9.117	1.965	19.364
Case-Fatality	2,1%	3,1%	7,1%	0,5%	3,2%
ASIA					
Countries		China	India	Iran	Japan
Cases	89.895	3.621.245	373.570	67.865	67.865
Deaths	4.722	64.469	21.462	1.279	1.279
Case-Fatality	5,3%	1,8%	5,7%	1,9%	1,9%
EUROPE					
Countries		France	Germany	Italy	Spain
Cases	277.943	242.381	268.218	439.286	439.286
Deaths	30.606	9.298	35.477	29.011	29.011
Case-Fatality	11,0%	3,8%	13,2%	6,6%	6,6%
OCEANIA					
Countries		Australia	New Zealand		
Cases		25.670	1.387		
Deaths		611	22		
Case-Fatality		2,4%	1,6%		

Source: Cases and Deaths data from the European Centre for Disease Prevention and Control (ECDC). Population data from the Country Meters.

Table 2: Prais-Winsten regression estimates and Daily Percent Change (DPC) of case-fatality, incidence and mortality rates due to COVID-19, according to countries of Africa and Americas. Jan-Aug, 2020.

Continent / Countries	DPC (CI 95%) Case-Fatality	p Value	Case-Fatality Trend	DPC (CI 95%) Incidence	p Value	Incidence Trend	DPC (CI 95%) Mortality	p Value	Mortality Trend
World	0.3 (-0.2 : 0.7)	0.225	Flat	4.9 (2.0 : 7.8)	0.001	Increasing	3.9 (1.5 : 6.5)	0.002	Increasing
Africa									
Morocco	-1.1 (-1.5 : -0.7)	< 0.001	Decreasing	3.1 (2.4 : 3.9)	< 0.001	Increasing	1.3 (0.6 : 2.1)	0.001	Increasing
Nigeria	-0.2 (-0.5 : 0.2)	0.371	Flat	3.4 (2.0 : 4.8)	< 0.001	Increasing	0.6 (0.1 : 1.1)	0.031	Increasing
South Africa	1.5 (0.4 : 2.6)	0.007	Increasing	4.9 (3.2 : 6.5)	< 0.001	Increasing	3.4 (3.0 : 3.9)	< 0.001	Increasing
Americas									
Argentina	-0.6 (-1.1 : -0.2)	0.005	Decreasing	4.5 (3.9 : 5.0)	< 0.001	Increasing	2.8 (2.7 : 3.0)	< 0.001	Increasing
Brazil	1.3 (0.1 : 2.6)	0.036	Increasing	5.8 (2.1 : 9.6)	0.002	Increasing	3.0 (1.0 : 5.1)	0.003	Increasing
Canada	1.0 (0.2 : 1.9)	0.015	Increasing	3.5 (1.4 : 5.6)	0.001	Increasing	-0.02 (-1.6 : 1.6)	0.985	Flat
Chile	1.8 (0.9 : 2.7)	< 0.001	Increasing	3.8 (0.9 : 6.8)	0.010	Increasing	2.5 (1.7 : 3.2)	< 0.001	Increasing
Colombia	1.2 (0.1 : 2.2)	0.028	Increasing	5.4 (4.3 : 6.6)	< 0.001	Increasing	3.5 (3.2 : 3.8)	< 0.001	Increasing
Mexico	1.5 (0.5 : 2.5)	0.004	Increasing	4.1 (1.1 : 7.2)	0.008	Increasing	3.6 (2.3 : 4.8)	< 0.001	Increasing
Peru	0.8 (0.4 : 1.1)	< 0.001	Increasing	4.3 (2.7 : 5.9)	< 0.001	Increasing	2.6 (1.8 : 3.3)	< 0.001	Increasing
United States	0.3 (-0.4 : 1.0)	0.367	Flat	6.0 (2.8 : 9.3)	< 0.001	Increasing	2.2 (-0.01 : 4.5)	0.051	Flat

DPC – Daily Percent Change (%); CI 95% – Confidence Interval 95%; p Value – probability of statistics significance

Source: Cases and Deaths data from the European Centre for Disease Prevention and Control (ECDC). Population data from the countrymeters.info.

Table 3: Prais-Winsten regression estimates and Daily Percent Change (DPC) of case-fatality, incidence and mortality rates due to COVID-19, according to countries of Asia, Europe and Oceania. Jan-Aug. 2020.

Continent / Countries	DPC (CI 95%) Case-Fatality	p Value	Case-Fatality Trend	DPC (CI 95%) Incidence	p Value	Incidence Trend	DPC (CI 95%) Mortality	p Value	Mortality Trend
Asia									
China	0.4 (0.3 : 0.6)	< 0.001	Increasing	-0.2 (-1.5 : 1.1)	0.753	Flat	-0.5 (-1.5 : 0.4)	0.281	Flat
India	0.01 (-0.3 : 0.4)	0.060	Flat	6.2 (5.0 : 7.4)	< 0.001	Increasing	4.5 (3.5 : 5.5)	< 0.001	Increasing
Iran	-1.5 (-2.6 : -0.2)	0.019	Decreasing	1.7 (0.5 : 3.0)	0.007	Increasing	1.5 (0.8 : 2.1)	< 0.001	Increasing
Japan	-0.1 (-0.8 : 0.6)	0.727	Flat	2.7 (2.0 : 3.4)	< 0.001	Increasing	0.3 (-0.4 : 0.9)	0.432	Flat
Saudi Arabia	1.4 (0.3 : 2.4)	0.013	Increasing	3.0 (1.0 : 5.1)	0.004	Increasing	1.9 (1.3 : 2.4)	< 0.001	Increasing
South Korea	0.5 (-0.1 : 1.0)	0.08	Flat	2.2 (1.0 : 3.4)	< 0.001	Increasing	-0.7 (-1.0 : -0.4)	< 0.001	Decreasing
Europe									
France	0.2 (-0.7 : 1.1)	0.627	Flat	3.6 (2.0 : 5.2)	< 0.001	Increasing	0.9 (-0.9 : 2.8)	0.319	Flat
Germany	1.8 (0.7 : 2.9)	0.001	Increasing	3.5 (0.7 : 6.5)	0.015	Increasing	-0.4 (-1.8 : 1.0)	0.530	Flat
Italy	0.8 (0.1 : 1.6)	0.022	Increasing	2.6 (-0.3 : 5.6)	0.077	Flat	-0.6 (-2.4 : 1.1)	0.465	Flat
Spain	1.8 (0.05 : 3.5)	0.044	Increasing	4.0 (2.0 : 6.0)	< 0.001	Increasing	-1.4 (-3.1 : 0.2)	0.090	Flat
Switzerland	0.7 (-0.1 : 1.6)	0.071	Flat	1.0 (-0.6 : 2.7)	0.227	Flat	-1.0 (-1.8 : -0.1)	0.026	Decreasing
United Kingdom	2.0 (0.6 : 3.4)	0.005	Increasing	3.5 (0.1 : 6.9)	0.045	Increasing	0.5 (-2.0 : 3.0)	0.707	Flat
Russia	1.2 (0.5 : 2.0)	0.001	Increasing	4.4 (1.9 : 7.0)	0.001	Increasing	1.7 (0.6 : 2.8)	0.004	Increasing
Oceania									
Australia	-0.2 (-1.2 : 0.7)	0.629	Flat	2.6 (1.4 : 3.8)	< 0.001	Increasing	0.6 (0.6 : 1.6)	< 0.001	Increasing
New Zealand	1.3 (0.1 : 2.5)	0.04	Increasing	-0.3 (-1.4 : 0.7)	0.533	Flat	-0.7 (-2.6 : 1.3)	0.462	Flat

DPC – Daily Percent Change (%); CI 95% – Confidence Interval 95%; p Value – probability of statistics significance

Source: Cases and Deaths data from the European Centre for Disease Prevention and Control (ECDC). Population data from the countrymeters.info.

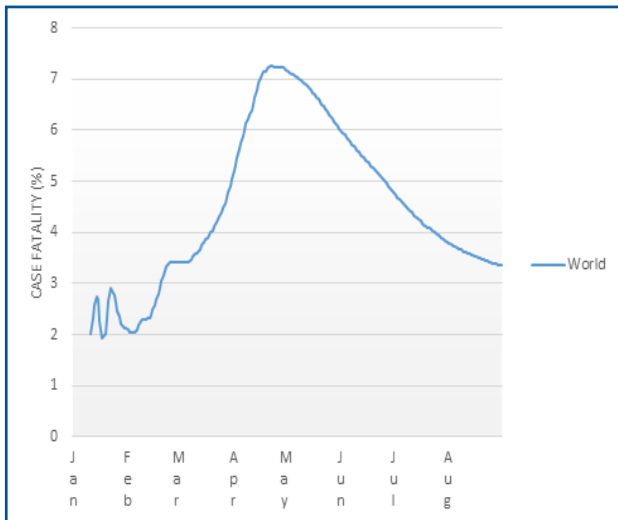


Figure 1: Temporal trend of case-fatality rates (%) of COVID-19 in the World. December, 2019 - August 2020.

Source: Cases and Deaths data from the European Centre for Disease Prevention and Control (ECDC). Population data from the Country Meters.

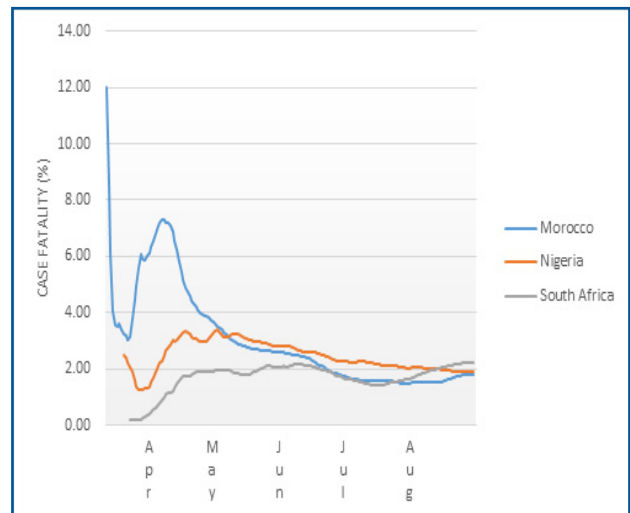


Figure 2: Temporal trend of case-fatality (%) of COVID-19, according to countries of Africa, December, 2019 - August 2020.

Source: Cases and Deaths data from the European Centre for Disease Prevention and Control (ECDC). Population data from the Country Meters.

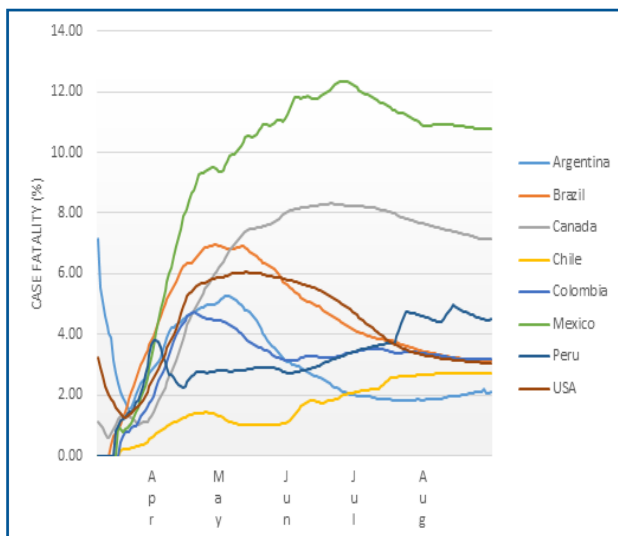


Figure 3: Temporal trend of case-fatality (%) of COVID-19, according to countries of Americas, December, 2019 - August 2020.

Source: Cases and Deaths data from the European Centre for Disease Prevention and Control (ECDC). Population data from the Country Meters.

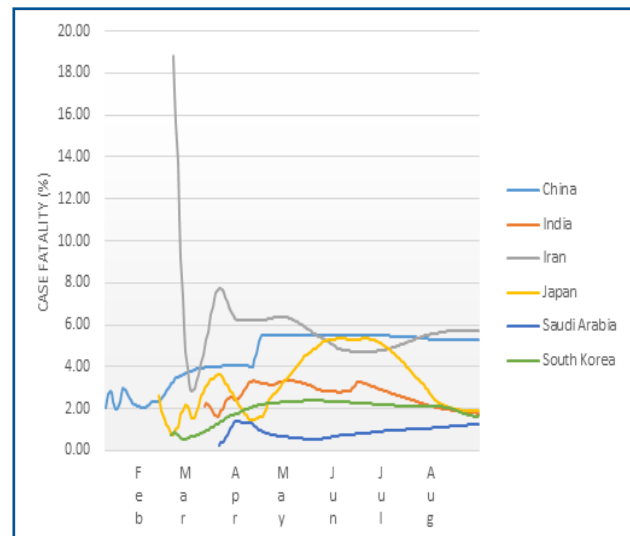


Figure 4: Temporal trend of case-fatality (%) of COVID-19, according to countries of Asia, December, 2019 - August 2020.

Source: Cases and Deaths data from the European Centre for Disease Prevention and Control (ECDC). Population data from the Country Meters.

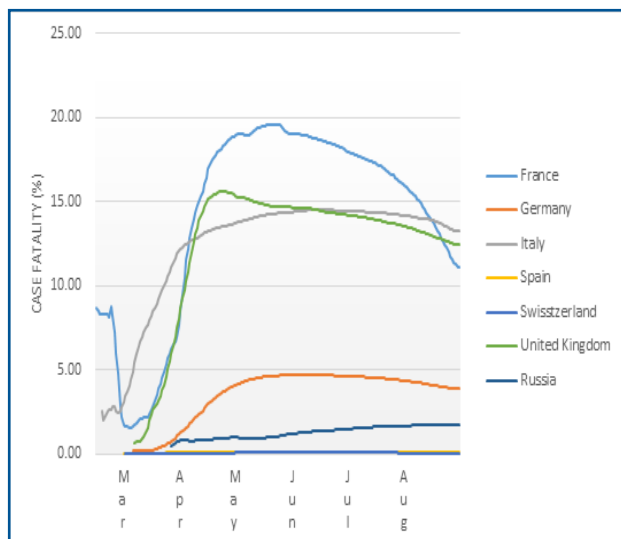


Figure 5: Temporal trend of case-fatality (%) of COVID-19, according to countries of Europe, December, 2019 - August 2020.

Source: Cases and Deaths data from the European Centre for Disease Prevention and Control (ECDC). Population data from the Country Meters.

Case-fatality Rates

Between December 31, 2019, and August 3, 2020, the case-fatality due to COVID-19 in the world was 3.4%.

In Africa, among countries analyzed, the highest case-fatality was found in South Africa (2.2%), followed by Nigeria (1.9%) and Morocco (1.8%). Similar results were found in Oceania: Australia (2.4%) and New Zealand (1.6%) (Table 1).

In the Americas, Mexico had the greatest case-fatality rate: 10.8%, which represents the fourth country with the highest percentage. Canada also showed high case-fatality rate: 7.1%. In the other American countries we found similar percentages in case-fatality rates, except Chile, where it was 0.5%, the lowest rate between all countries (Table 1).

Asia had two different profile of groups: China and Iran had case-fatality rate above 5.0%, while the rest of Asian countries showed rates below 2.0% (Table 1).

Europe had the most heterogeneous results compared with other continents. Italy, France and United Kingdom had case-fatality rates above 10.0%. Spain and Switzerland show intermediary rates among European countries, while German and Russia were the countries with the lowest rates in case-fatality in the continent. (Table 1).

Trends in case-fatality rates

Trends in case-fatality rates in the world were flat (DPC = 0.3; CI 95% [-0.2 : 0.7]; p = 0.225) in the study period (Table 2, Fig. 1).

Morocco was one of the three countries in which the case-fatality rate was decreasing (DPC = -1.1; CI 95% [-1.5 : -0.7]; p < 0.001). In Nigeria, the case-fatality was flat, while in South Africa it was increasing (Table 2, Fig. 2).

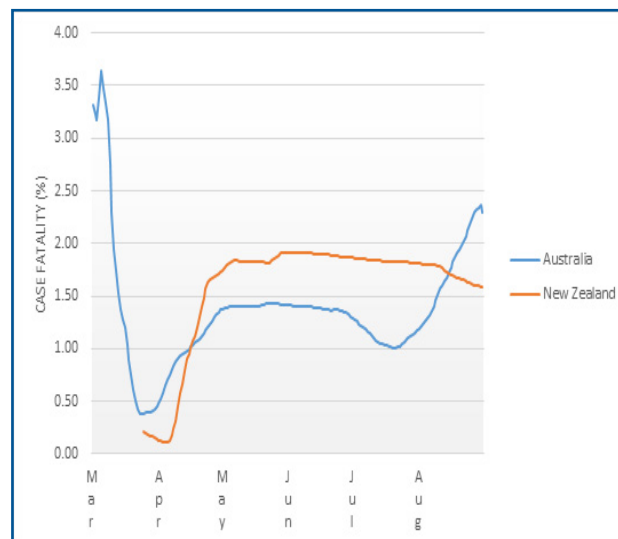


Figure 6: Temporal trend of case-fatality (%) of COVID-19, according to countries of Oceania, December, 2019 - August 2020.

Source: Cases and Deaths data from the European Centre for Disease Prevention and Control (ECDC). Population data from the Country Meters.

In the Americas, Argentina had decreasing trends in case-fatality (DPC = -0.6; CI 95% [-1.1: -0.2]; p = 0.005), while all other countries had increasing trends. The United States, on the other hand, had flat rate trends. (Table 2, Fig. 3).

With regard to Asian countries, Iran showed decreasing trends in case-fatality rate (DPC = -1.5; CI 95% [-2.6: -0.2]; p = 0.019). China and Saudi Arabia had increasing trends, while India and South Korea showed flat tendency (Table 3, Fig. 4).

In Europe, France and Switzerland had flat trends in case-fatality, but all the other countries had increasing tendency (Table 3, Fig. 5).

Finally, in Oceania, Australia had flat tendency, while New Zealand had increasing trends in case-fatality due to COVID-19 (Table 3, Fig 6).

DISCUSSION

We estimated trends in case-fatality rates by calculating the Daily Percent Change in case-fatality rates, which allows the understanding of the dynamic of the pandemic better than simply analyzing rates⁹. Between December 31, 2019 and August 31, 2020, trends in case-fatality due to COVID-19 in the world remained flat. Argentina, Iran and Morocco were the only countries that had decreasing trends in case-fatality rates. Nigeria, United States, India, Japan, South Korea, France, Germany, Switzerland and Australia had flat tendency. All other countries showed increasing trends, which can indicate progressive severity of the disease around the five continents.

Our findings showed case-fatality rates in the world similar to Zhao *et al.* study, who found a rate of 3.1% after analyzing 30 studies with 53.000 patients¹². Another study estimating case-fatality rates showed expected rates for this pandemic ranging from 2.9% to 3.0%⁹. As we already

pointed out, case-fatality rates are not static, but rather dynamic. Our statistical analyses of world trends suggest a flat tendency ($p > 0.05$).

Increasing Case-Fatality Rate Trends

South Africa, Brazil, Canada, Chile, Colombia, Mexico, Peru, China, Saudi Arabia, Germany, Italy, Spain, United Kingdom, Russia and New Zealand had increasing trends in case-fatality rates due to COVID-19. Among all of them, Canada, Mexico, Peru, Germany, Italy, Spain and United Kingdom had case-fatality rates above the world's rate, which can possibly indicate an highest severity of the disease in those nations. Germany, Spain and United Kingdom showed the greatest Daily Percent Change, indicating that Europe still is the continent most affected by COVID.

With regard to Canada, our results contrasts with Abdollahi *et al.* findings, who found a case-fatality rate of 1.6% (CI 95% 0.7%–3.1%) on April 22, which is significantly lower than ours¹³. It demonstrates that COVID-19 has substantially increased over the past 4 months. Therefore, it is noteworthy that Canada had a high severity of the disease, which is still in progress.

Regarding Europe, we found the same behavior for case-fatality rates pointed by Pachetti *et al.*, who described a significant lower rate for Germany (0.31% CI 95% [0.29; 0.33]) compared to the other nations, on April 30¹⁴. Although the estimation of case-fatality rates are not high in Germany, this country had the second increasing Daily Percent Change in case-fatality rates among all 26 countries analyzed. Aside from Germany, Russia had low case-fatality rates, but it had also increasing trends. The United Kingdom had the highest case-fatality rate and upward trend among the nations analyzed in our study.

Flat Case-Fatality Rate Trends

Nigeria, United States, India, Japan, South Korea, France, Switzerland, Australia had flat tendency in case-fatality rates due to COVID-19. France and Switzerland were the only nations with rates above the world's, which suggests the hypothesis that Europe is not in a regression phase of the pandemic.

With respect to Australia, Chin *et al.* already noted signs that pandemic was under control. They identified case-fatality rates ranging 0.4% to 3.0%, tending to decrease after March 29¹⁵. This decrease may be attributed to timely implementation and strict enforcement of bans on travel and social gatherings, as well as concerted diagnostic and management strategies.

The United States also showed signs of controlling the spread of COVID-19. On April 22, Abdollahi *et al.* reported a case-fatality rate of 6.1% (CI 95% 5.4%–6.9%)¹³, which corresponds approximately 2 times our results. This finding suggests that case-fatality rates might have decreased in the previous 4 months and a new flat trend emerged.

Decreasing Case-Fatality Rate Trends

Morocco, Argentina and Iran showed decreasing trends in case-fatality rates of COVID-19. Despite of that, Iran was the only country in which case-fatality was above the estimative of the world's rate.

As of May 13, 2020 Ouchetto *et al.* reported case-fatality rate 5.26% in Morocco¹⁶, almost 3 times greatest than our findings, supporting the hypothesis that pandemic is tending to be controlled in this nation.

Regarding Iran, we have to interpret these results with parsimony, since according to studies, cases reported in official statistics at the beginning of the epidemics were likely to grossly underestimate the total of actual cases. Thus estimating the actual case-fatality rates due to COVID-19 is currently impossible¹⁷.

It is important to highlight that our analysis was based on public and official secondary data from the European Centre for Disease Prevention and Control. Even considering unknown underreporting, these are the best available data to formulate public health policies. The analysis of incidence, mortality, case-fatality rates and their respective trends allowed for measurement of risk, severity, and magnitude, which are defining indicators to understand the dynamics of pandemics⁶.

The time-series regression model used in this study allowed to dimension the existence the Daily Percent Change (DPC) in case-fatality rates, which made it possible to measure the dynamic variation of the pandemic among 26 countries around the five continents worldwide.

CONCLUSIONS

Trends in case-fatality rates of COVID-19 in the World were flat between December, 31 and August, 31. Argentina, Iran and Morocco were the only countries with decreasing trends. On the other hand, South Africa, Brazil, Canada, Chile, Colombia, Mexico, Peru, China, Saudi Arabia, Germany, Spain, United Kingdom, Russian and New Zealand had increasing trends in case-fatality rate. All the other countries analyzed had flat trends. Based on case-fatality rate data, our study supports that COVID-19 pandemic is still in progress worldwide.

Funding

None.

Competing interests

None declared.

Ethical approval

Not required.

Acknowledgements

We thank Prof. Luiz for his contributions in the study design and scientific writing.

Contact the authors for more information

Henrique M. Bernal – henriquemernal@hotmail.com

Carlos Eduardo Siqueira – carlos.siqueira@umb.edu

Fernando Adami – Fernando.adami@fmabc.br

Edige Felipe de Sousa Santos – edige@usp.br

REFERENCES

1. Brasil. Ministério da Saúde. What coronavirus is? (COVID-19). [cited 2020 Mair 09] Available from: <https://coronavirus.saude.gov.br/>
2. Pimentel RMM, Daboin BEG, Oliveira AG, Macedo Jr H. The dissemination of COVID-19: an expectant and preventive role in global health. *J Hum Growth Dev.* 2020; 30(1): 135-140. DOI: <http://doi.org/10.7322/jhgd.v30.9976>
3. Phelan A, Katz R, Gostin LO. The Novel Coronavirus Originating in Wuhan, China: Challenges for Global Health Governance. *JAMA.* 2020; 323(8): 709-10. DOI: <http://doi.org/10.1001/jama.2020.1097>
4. World Health Organization (WHO). Available on: <https://www.who.int/emergencies/diseases/novel-coronavirus-2019/question-and-answers-hub/q-a-detail/malaria-and-the-covid-19-pandemic>
5. Abreu LC. Integrated actions and strengthening of Public Health System in Brazil in a time of pandemic. *J Hum Growth Dev.* 2020; 30(1): 05-08. DOI: <https://doi.org/10.7322/jhgd.v30.9980>
6. Pandemic responses: Planning to neutralize SARS-CoV-2 and prepare for future outbreaks. *PLoS Med* 17(4): e1003123. DOI: <https://doi.org/10.1371/journal.pmed.1003123>
7. Dircinha S. Scientific method and research in health: orientation for professional practice. *J Hum Growth Dev.* 2019; 29(1): 5-9. DOI: <http://dx.doi.org/10.7322/jhgd.157742>
8. Valenti VE, Menezes PL, de Abreu ACG, Alves Vieira GN, Garner DM. Social distancing measures could have reduced estimated deaths related to COVID-19 in Brazil. *J Hum Growth Dev.* 2020; 30(2):164-169. DOI: <https://doi.org/10.7322/jhgd.v30.10360>
9. Abou Ghayda R, Lee KH, Han YJ, et al. Estimation of global case fatality rate of coronavirus disease 2019 (COVID-19) using meta-analyses: Comparison between calendar date and days since the outbreak of the first confirmed case [published online ahead of print, 2020 Aug 31]. *Int J Infect Dis.* 2020; S1201-9712(20) 30694-9. DOI: <https://doi.org/10.1016/j.ijid.2020.08.065>
10. Antunes JLF, Cardoso MRA. [Using time series analysis in epidemiological studies]. *Epidemiol Serv Saúde* 2015; 24 (03) 565-576.
11. Calderon MG, Santos EFS, Abreu LC, Raimundo RD. Increasing prevalence, time trend and seasonality of gastroschisis in São Paulo state, Brazil, 2005-2016. *Sci Rep.* 2019; 9(1):14491. Published 2019 Oct 10. DOI: <https://doi.org/10.1038/s41598-019-50935-1>
12. Zeng W, Zhang Y, Wang L, et al. Ambient fine particulate pollution and daily morbidity of stroke in Chengdu, China. *PLoS One.* 2018; 13(11): e0206836. Published 2018 Nov 6. DOI: <https://doi.org/10.1371/journal.pone.0206836>
13. Zhao X, Zhang B, Li Pet al. (2020). Incidence, clinical characteristics and prognostic factor of patients with COVID-19: A systematic review and meta-analysis. *medRxiv* 2020.03.17.20037572. DOI: <https://doi.org/10.1101/2020.03.17.20037572>
14. Abdollahi E, Champredon D, Langley JM, Galvani AP, Moghadas SM. Temporal estimates of case-fatality rate for COVID-19 outbreaks in Canada and the United States. *CMAJ.* 2020; 192(25): E666-E670. DOI:10.1503/cmaj.200711.
15. Pachetti M, Marini B, Giudici F, et al. Impact of lockdown on Covid-19 case fatality rate and viral mutations spread in 7 countries in Europe and North America. *J Transl Med.* 2020; 18(1): 338. Published 2020 Sep 2. DOI: <https://doi.org/10.1186/s12967-020-02344-6>
16. Chin KL, Ofori-Asenso R, Jordan KA, Jones D, Liew D. Early signs that COVID-19 is being contained in Australia. *J Infect.* 2020; 81(2): 318-356. DOI: <https://doi.org/10.1016/j.jinf.2020.04.042>
17. Ouchetto O, Drissi Bourhanbour A, Boumhamdi M. Effectiveness of containment measures to control the spread of COVID-19 in North Africa [published online ahead of print, 2020 Sep 3]. *Disaster Med Public Health Prep.* 2020; 1-15. DOI: <https://doi.org/10.1017/dmp.2020.314>
18. Battagay M, Kuehl R, Tschudin-Sutter S, Hirsch HH, Widmer AF, Neher RA. 2019-novel Coronavirus (2019-nCoV): estimating the case fatality rate—a word of caution. *Swiss Med Wkly.* 2020;150(0506).

Resumo

Introdução: As infecções por CoV podem causar desde um simples resfriado até uma síndrome respiratória grave, como a Síndrome Respiratória Aguda Grave e a Síndrome Respiratória do Oriente Médio (MERS-CoV). O COVID-19 impôs uma nova realidade em termos de modelos globais de saúde.

Objetivo: Avaliar as tendências das taxas de letalidade do COVID-19 no mundo.

Método: Estudo de séries temporais de base populacional usando dados públicos e oficiais de casos e mortes por COVID-19 na Argentina, Austrália, Brasil, Chile, China, Colômbia, França, Alemanha, Índia, Irã, Itália, Japão, México, Marrocos, Nova Zelândia, Nigéria, Peru, Arábia Saudita, África do Sul, Coreia do Sul, Espanha, Suíça, Reino Unido, Estados Unidos (EUA) e Rússia, entre 31 dezembro de 2019 e 31 agosto de 2020. Os dados foram baseados nos relatórios do Centro Europeu de Prevenção e Controle de Doenças. COVID-19 foi definido pela Classificação Internacional de Doenças, 10ª revisão (U07.1). Para análise estatística, foi realizado o modelo de regressão de Prais-Winsten, a partir do qual foi possível calcular a variação percentual de mudança diária (DPC) das taxas, classificadas como crescentes, decrescentes ou estacionárias.

Resultados: Durante o período do estudo, as taxas de letalidade no mundo permaneceram estacionárias (DPC = 0,3; IC 95% [-0,2; 0,7]; $p = 0,225$). Na África, Marrocos teve tendência decrescente (DPC = -1,1; IC 95% [-1,5; -0,7]; $p < 0,001$), enquanto na África do Sul houve tendência crescente ($p < 0,05$) e estacionária na Nigéria ($p > 0,05$). Em relação às Américas, a Argentina revelou tendência decrescente nas taxas de letalidade (DPC = -0,6; IC 95% [-1,1; -0,2]; $p = 0,005$), os EUA demonstraram tendência estacionária ($p > 0,05$) e todos os outros países americanos demonstraram tendências crescentes ($p < 0,05$). Na Ásia, o Irã apresentou tendência decrescente (DPC = -1,5; IC 95% [-2,6; -0,2]; $p = 0,019$); China e Arábia Saudita apresentaram tendências crescentes ($p < 0,05$), enquanto Índia, Japão e Coreia do Sul mantiveram tendência estacionária ($p > 0,05$). A maioria dos países europeus apresentaram tendências crescentes ($p < 0,05$): Alemanha, Itália, Espanha, Reino Unido e Rússia; França e Suíça demonstraram tendências estacionárias ($p > 0,05$). Por fim, na Oceania, a tendência nas taxas de letalidade na Austrália foi estacionária ($p > 0,05$) e aumentou na Nova Zelândia ($p < 0,05$).

Conclusão: A tendência nas taxas de letalidade por COVID-19 no mundo permaneceu estacionária entre 31 de dezembro de 2019 e 31 de agosto de 2020. Argentina, Irã e Marrocos foram os únicos países com tendências decrescentes. Por outro lado, África do Sul, Brasil, Canadá, Chile, Colômbia, México, Peru, China, Arábia Saudita, Alemanha, Espanha, Reino Unido, Rússia e Nova Zelândia apresentaram tendências crescentes de letalidade. Todos os outros países analisados demonstraram tendências estacionárias. De acordo com dados de letalidade, nosso estudo confirma que a pandemia de COVID-19 ainda está em fase de progressão em todo o mundo.

Palavras-chave: COVID-19, Tendência, Letalidade, Epidemiologia.

©The authors (2020), this article is distributed under the terms of the Creative Commons Attribution 4.0 International License (<http://creativecommons.org/licenses/by/4.0/>), which permits unrestricted use, distribution, and reproduction in any medium, provided you give appropriate credit to the original author(s) and the source, provide a link to the Creative Commons license, and indicate if changes were made. The Creative Commons Public Domain Dedication waiver (<http://creativecommons.org/publicdomain/zero/1.0/>) applies to the data made available in this article, unless otherwise stated.